

Change Powered by You

Dear Local Hope Supporter,

I'm pleased to share this Impact Report highlighting our staff's remarkable work and our stewardship of your investment in 2025. From 2021 through last year, the number of people we served grew by more than 170%. In 2025, we intentionally capped program growth to strengthen program quality and invest in the professional development of our dedicated staff. The result has been a visible increase in excellence across our services and a welcome calm as work loads return to more sustainable levels. At the end of this update, you'll see how we've "moved up," and through a partnership with our friends at Rotary, gained a life-saving tool that underpins the "X" in Xela Aid Clinic. We are deeply grateful to each of you whose support is helping build a strong foundation that will sustain the quality of our work for years to come.

Leslie
 Leslie Baer Dinkel, CEO



EDUCATION 2025

School in Guatemala is taught only in Spanish. When 4-year-old **Ervin** joined Local Hope's Montessori Preschool in 2023, he spoke only Mam, a Mayan language, and struggled with numbers and letters. Teachers worried he might not qualify for public school. One year later, Ervin is thriving—communicating in Mam and Spanish, spelling hundreds of words, and exploring advanced math. His teachers now say he is well prepared to succeed in school, and in life!

Educational Impact by the Numbers

- Preschoolers benefitting from Local Hope's Montessori school: **91**
- Students benefitting from our LEAP Scholarship Program: **160**
- Students benefitting from our Study Center: **66**
- Students in our Computer Lab/Technology Certificate Program: **500**
- Students benefitting from Adult Literacy, Continuing Education, and Language Certificate Programs: **135**
- Total Learning Hours across educational programs: **210,964**



HEALTH 2025

After a serious femur fracture at age 11 left him unable to walk unaided, **Nehemías** faced severe physical and emotional challenges. With support from Local Hope's health team, he began healing through counseling and creative expression. Learning crochet became powerful therapy, restoring his confidence and generating significant income from whimsical handmade animals and flowers he sold. While he'll need further surgery, now 12, Nehemías is back at school determined to build a large-scale business one day.

Health and Clean Environment by the Numbers

- Healthcare by General Medicine appointments: **7,228**
- Dental, Vision care and Physiotherapy appointments: **960**
- Families benefitting from Family Planning services: **34**
- Counseling and Mental Healthcare support visits: **745**
- Nutritious Hot Meals and Supplement Drinks served: **15,308**
- Beneficiaries of Emergency Assistance to ensure Food Security: **700**
- In-home Water Filters delivered this year (60) serving: **300**
- Total Benefit from all Healthcare: **9,423**





SELF RELIANCE 2025

Maidely came to Local Hope at age 18 with big dreams. At 28, she credits a LEAP Educational Scholarship and Leadership Training received at our Xela Aid Campus as key to her success today. After earning Bachelor's and Master's Degrees in Business Administration and armed with determination, Maidely launched Dely's Pizza. It's now a thriving local business with two locations, providing jobs and delicious pizza made with nutritious local ingredients. She's in the process of expanding!

Woman's Empowerment by the Numbers

- All youth empowered through Leadership Training: **25**
- Local Hope program graduates who gained employment: **10**
- Children with special needs (106) and their families served: **530**
- Seniors provided with critical services: **35**
- Women and girls benefitting from Local Hope programs: (68%) **10,284**

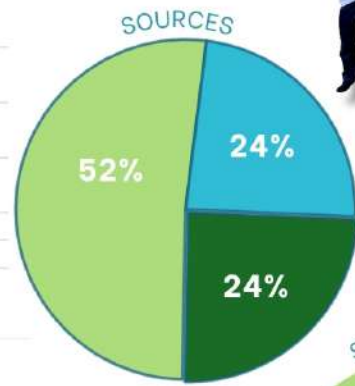
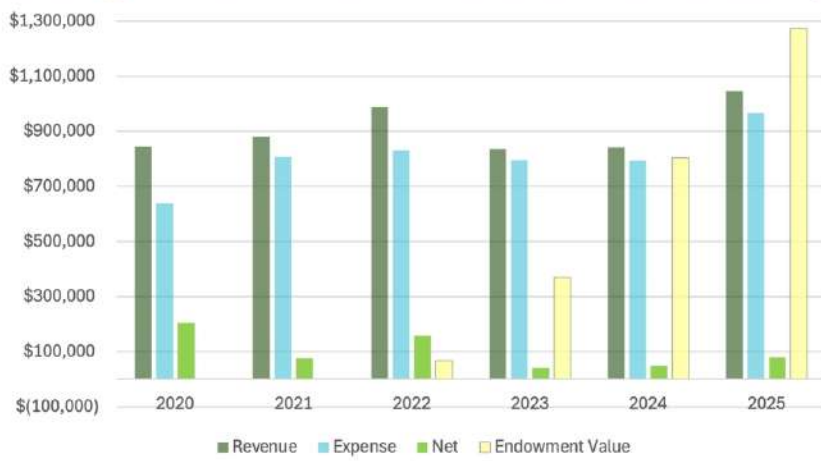


Summary of People Served • 2021 = 5,530  **• 2025 = 15,123** 

IMPACT REPORT 2025

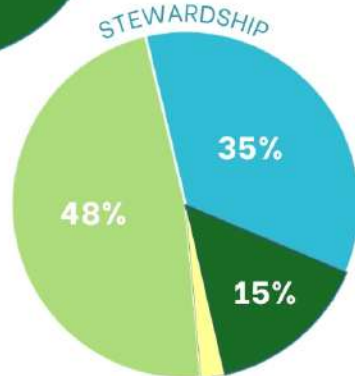


Change Over Time - Financial Stewardship



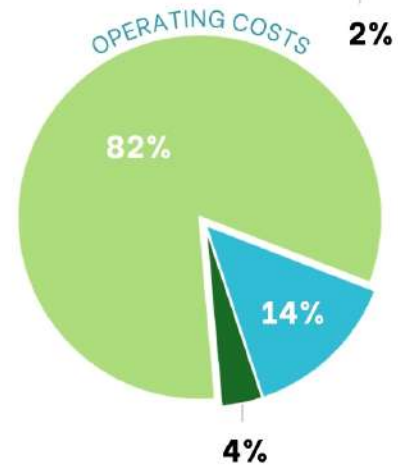
SOURCES OF SUPPORT 2025

Donations and Grants	\$716,653
Volunteer Trips/ Other Earned Income	\$328,198
Endowment, and Investment Income	\$340,960
Total	\$1,385,811



HOW WE STEWARDED YOUR PROGRAM SUPPORT 2025

EDUCATION - Educate Children and Adults	48%
HEALTH - Prevent Disease, Promote Well-Being	35%
ECONOMIC DEVELOPMENT - Fuel Jobs, Businesses, and Train Leaders	15%
EMERGENCY RELIEF - Food, Senior Services	2%



OPERATING COSTS 2025

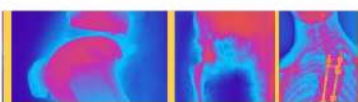
All Program Spending	82%
General Administration	14%
Fundraising	4%

TOP RATED



MOVING UP!

Full accessibility has arrived at Local Hope's Xela Aid Campus—which includes two three-story buildings—by way of two elevators. Special thanks to the **Directors** and **Advisors** of the **Local Hope Board**, who funded the project, and to project leader **Mel Dinkel** with support from **Elmer Mazariegos** and others on the ground. The campus is now the **ONLY** wheelchair-accessible facility in the region, especially helpful for our children and others with special needs and our seniors, and a boon for visitors with mobility challenges. As a bonus, they're beautiful!



X-RAYS TO ORDER!

Access to life-saving diagnostics shouldn't depend on distance or ability to pay. Thanks to the "**Health for All**" **Global Grant** made possible by our **Rotary** partners, including **Villa Park Rotary** (California), the local **Quetzaltenango Rotary Club**, and **The Rotary Foundation**, **Local Hope's Xela Aid Clinic** now has a high-quality **X-ray** machine. In just its first month of service, the device made it possible to detect pneumonia and, as a result, saved a life. After suffering months of breathing difficulties, Gonzalo, age 76, made a full recovery. We remain committed to expanding access to high-quality healthcare, because we believe good health is a right, not a privilege.

